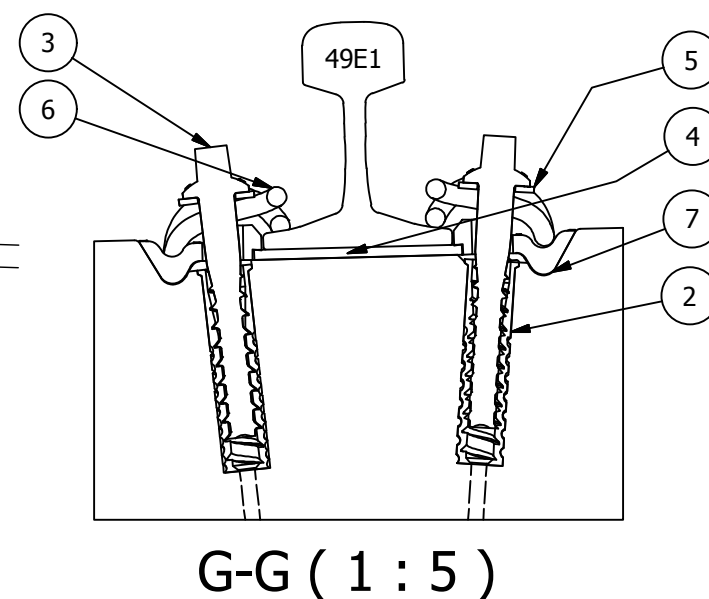
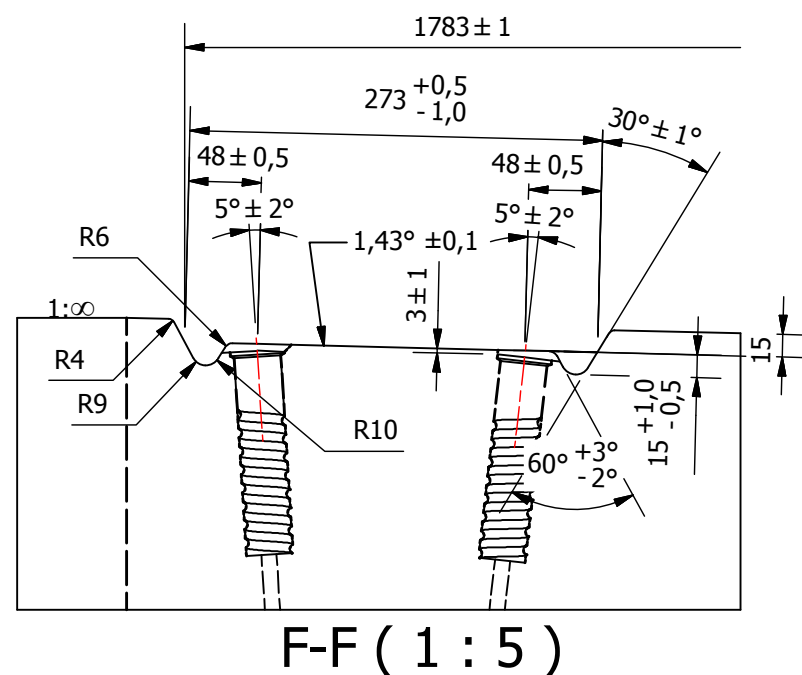

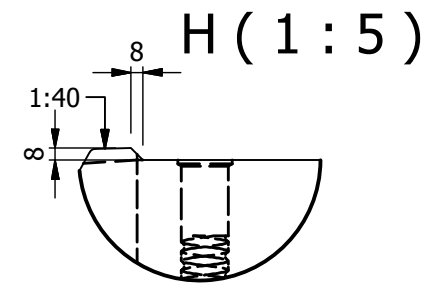
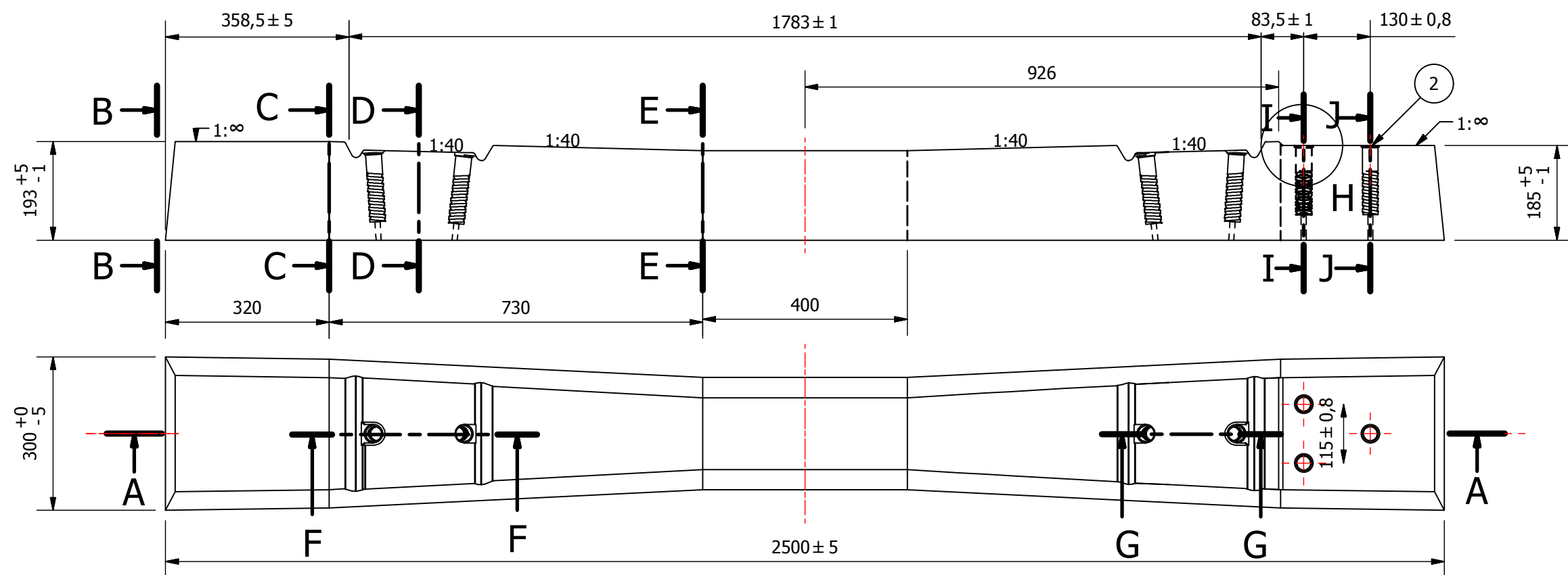


Opmerking:
-Schroefhulzen aan de onderzijde optioneel open uitvoeren

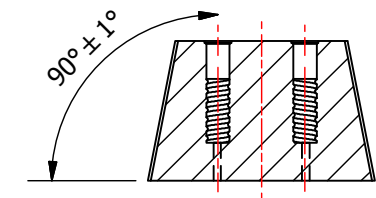
Hoeveelheid	Stuknr	Benaming	Tekeningnr
1	1	Dwarsligger B1	0001
4	2	Kunststof schroefhuls	0011
4	3	Kraagbout	1002
2	4	Kurkrubber railpad	1001
4	5	Volgring ULS 7	1003
4	6	Veerklem SKL 14	1005
4	7	Kunststof Opsluitplaat Wfp 14N -12	1004
2	8	Spoorstaaf 49E1	-



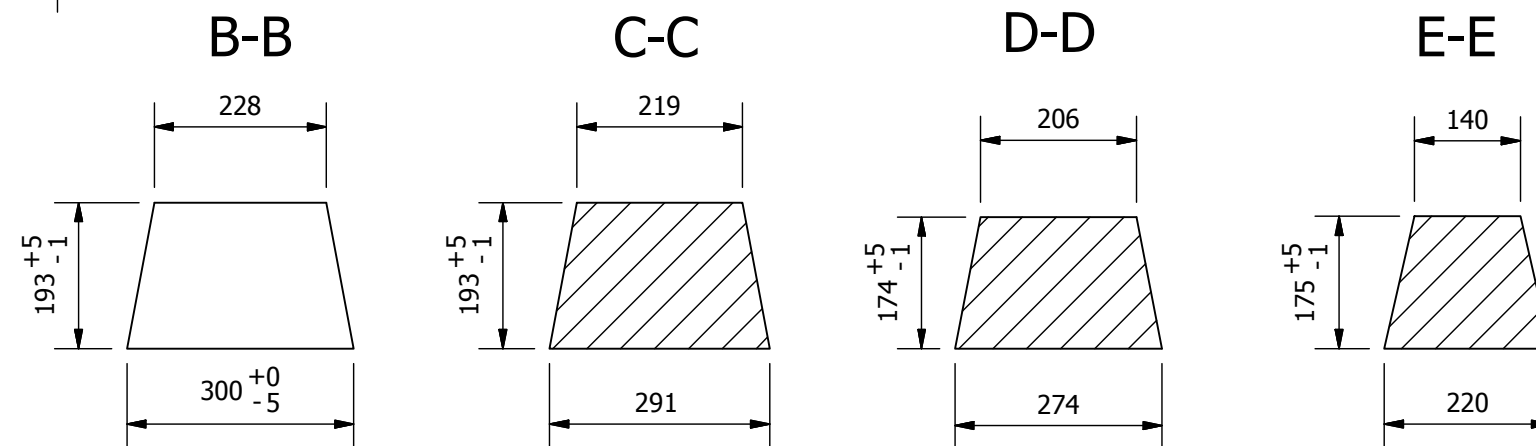
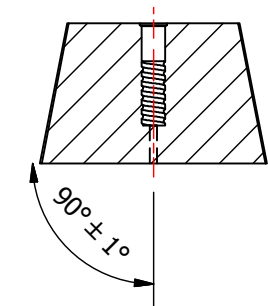
<div> GVB</div> <div>GVB Infra BV. Postbus 2131 1000 CC Amsterdam Tel: 020 - 460.6060</div>				
Getekend	D.L. Burggraaf		25-9-2015	nummer
Gecontroleerd	E. J. de Graaf		23-2-2016	
Discipline Spoor		Onderdeel		
Omschrijving Dwarsligger B1				
Tekeningnummer 0001		Wijziging A	Blad Van 1 van 1	Formaat A3 Schaal 1:10



I-I



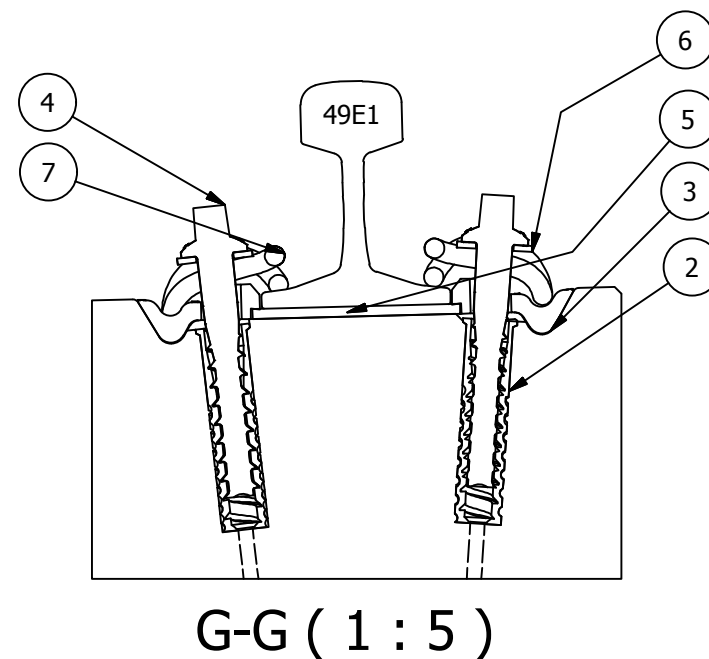
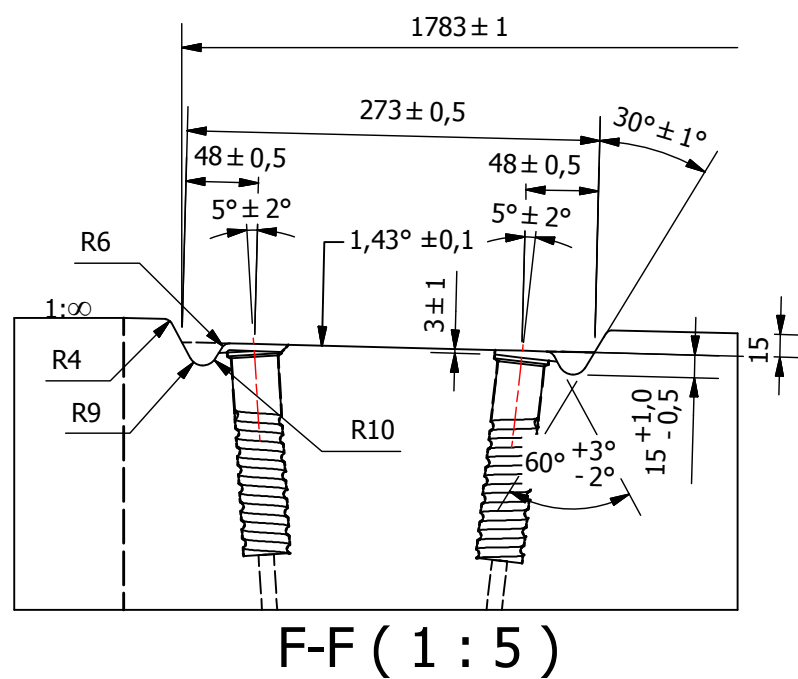
J-J




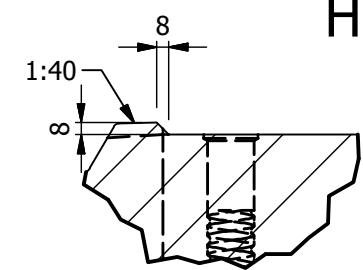
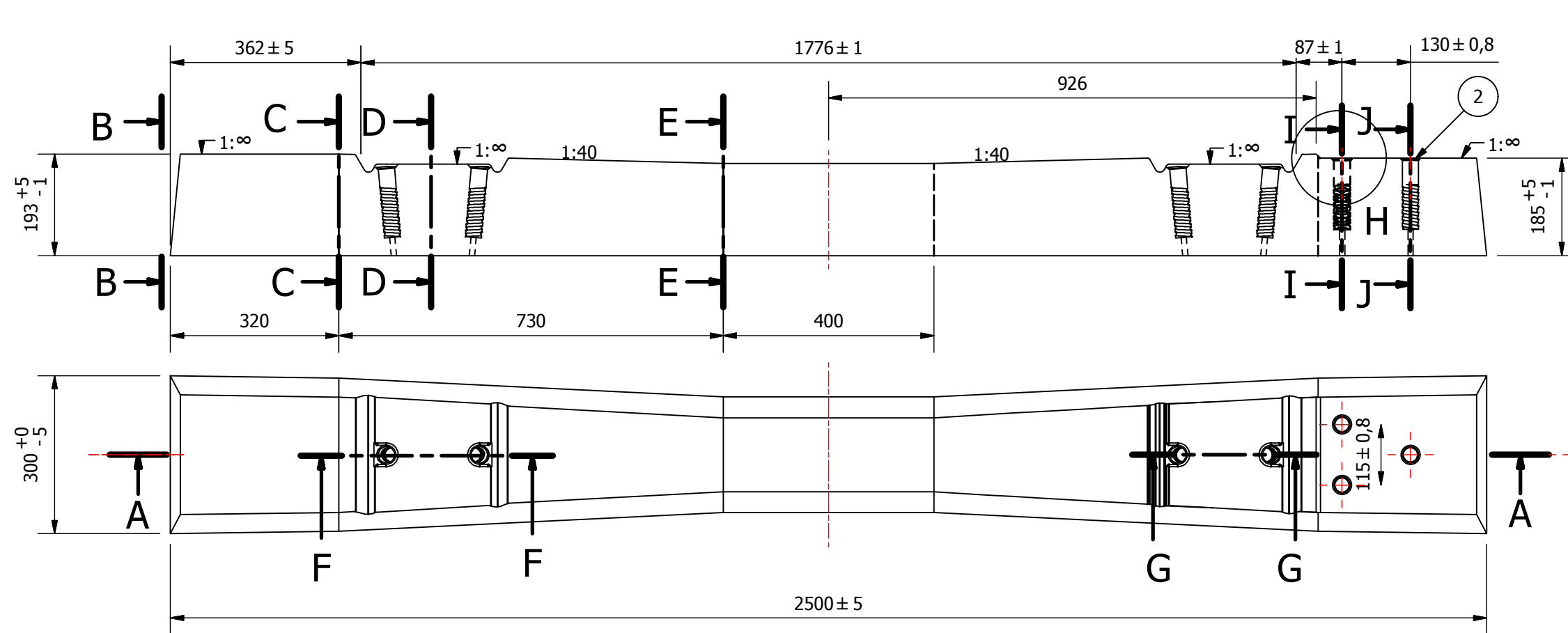
Opmerking:

-Schroefhulzen aan de onderzijde optioneel open uitvoeren

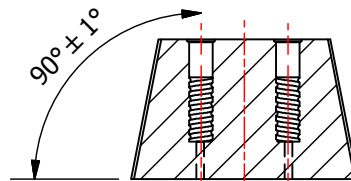
Hoeveelheid	Stuknr	Benaming	Tekeningnr
1	1	Dwarsligger B2	0002
4	2	Kunststof schroefhuls	0011
4	3	Kunststof opsluitplaat Wfp 14N - 12	1004
4	4	Kraagbout	1002
2	5	Kurkrubber railpad	1001
4	6	Volgring ULS 7	1003
4	7	Veerklem SKL 14	1005
2	8	Spoorstaaf 49E1	-



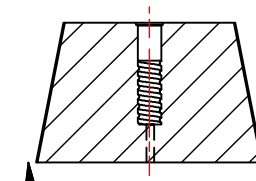
<div> GVB</div> <div>GVB Infra BV. Postbus 2131 1000 CC Amsterdam Tel: 020 - 460.6060</div>				
Getekend	D.L. Burggraaf		25-9-2015	nummer
Gecontroleerd	E. J. de Graaf		23-2-2016	
Discipline Spoor		Onderdeel		
Omschrijving Dwarsligger B2				
Tekeningnummer 0002		Wijziging A	Blad Van 1 van 1	Formaat A3 Schaal 1:10



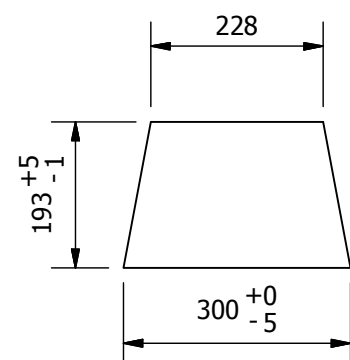
I-I



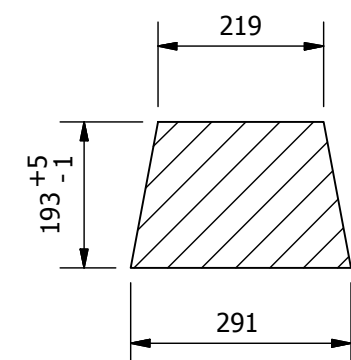
J-J



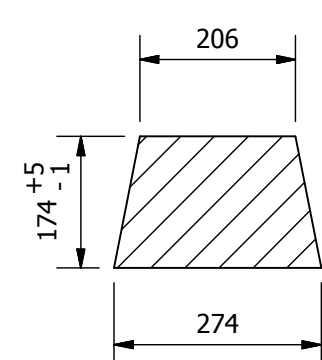
B-B



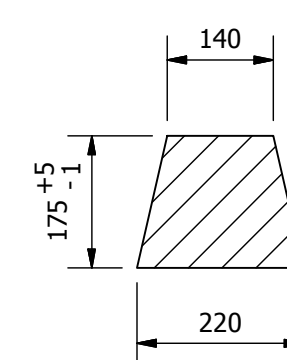
C-C



D-D



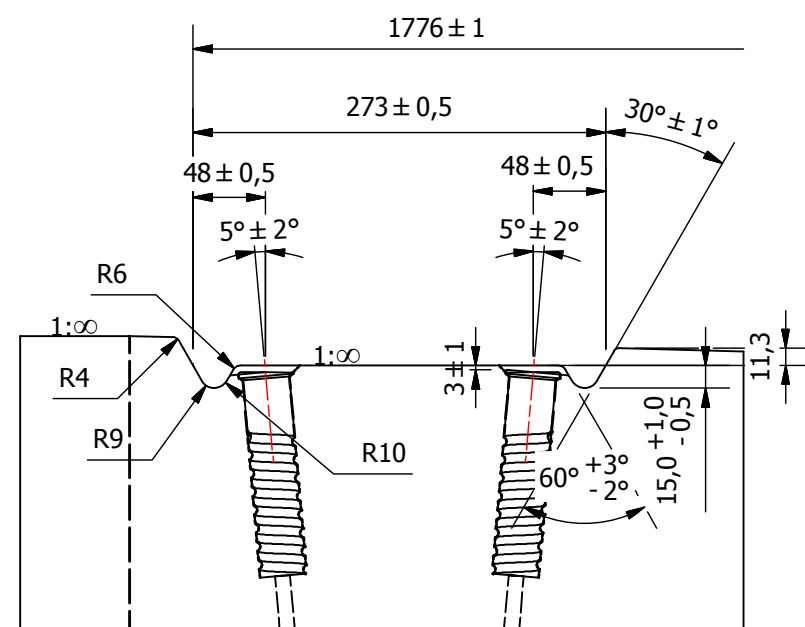
E-E



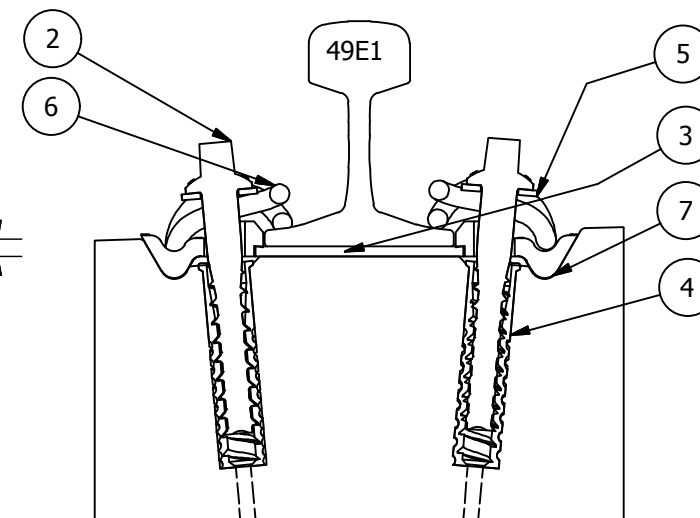
Opmerking:

-Schroefhulzen aan de onderzijde optioneel open uitvoeren

Hoeveelheid	Stuknr	Benaming	Tekeningnr
1	1	Dwarsligger B3	0003
4	2	Kraagbout	1002
2	3	Kurkrubber railpad	1001
7	4	Kunststof schroefhuls	0011
4	5	Volgring ULS 7	1003
4	6	Veerklem SKL 14	1005
4	7	Kunststof opsluitplaat Wfp 14N - 12	1004
2	8	Spoorstaaf 49E1	-



F-F (1 : 5)

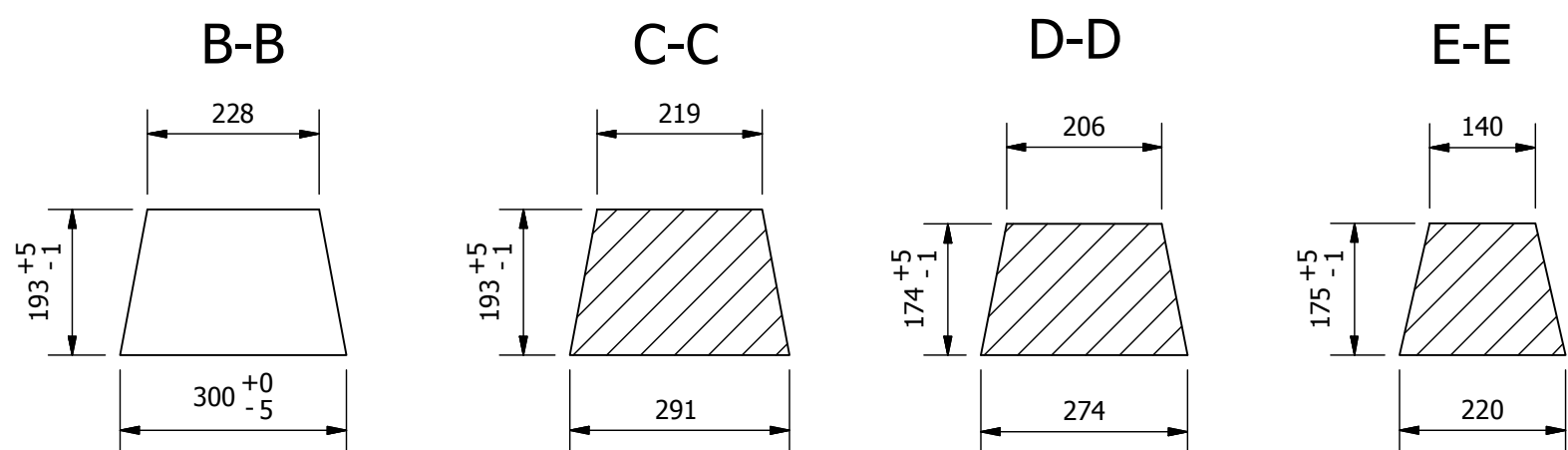
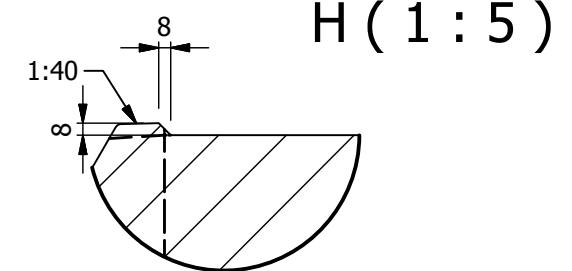
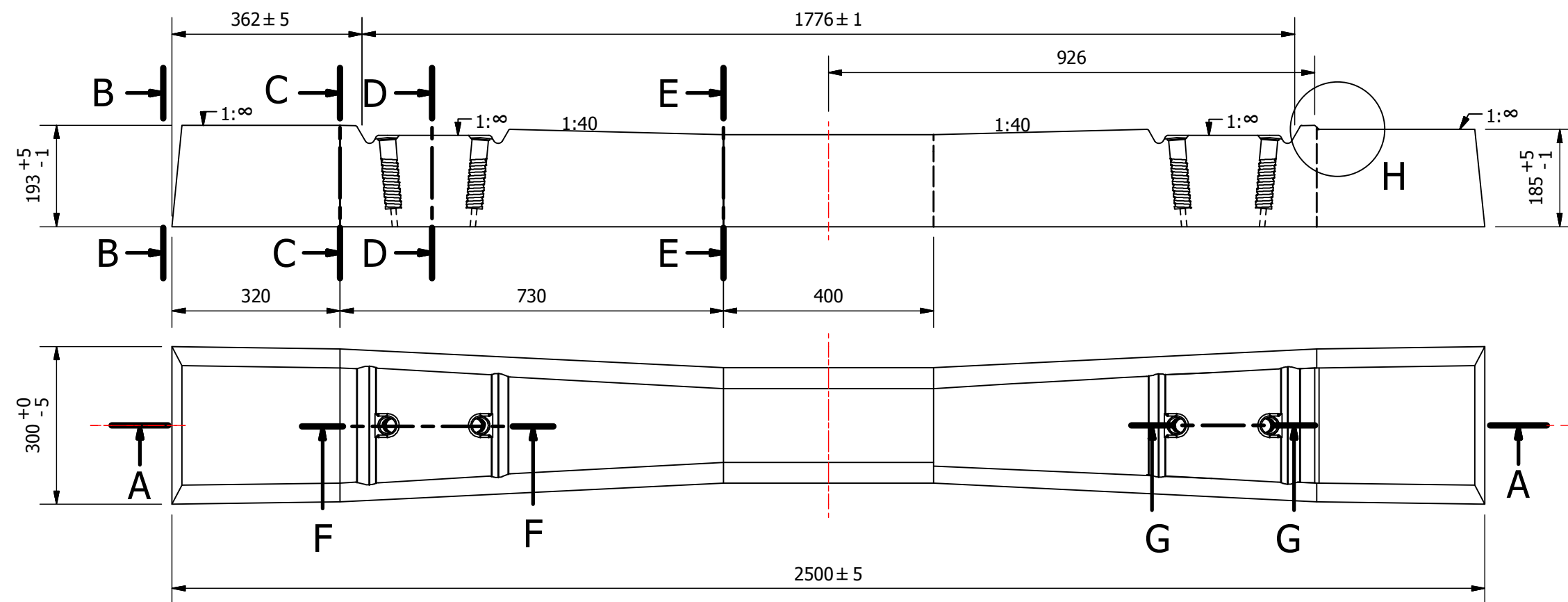


G-G (1 : 5)



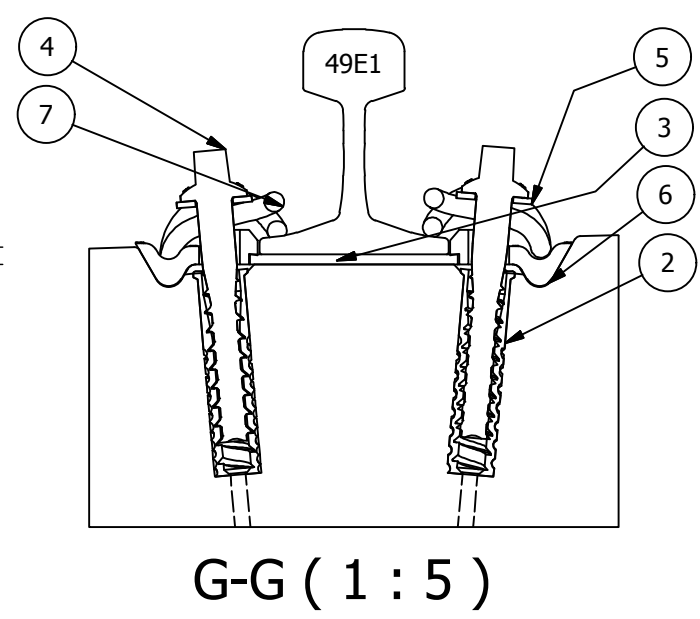
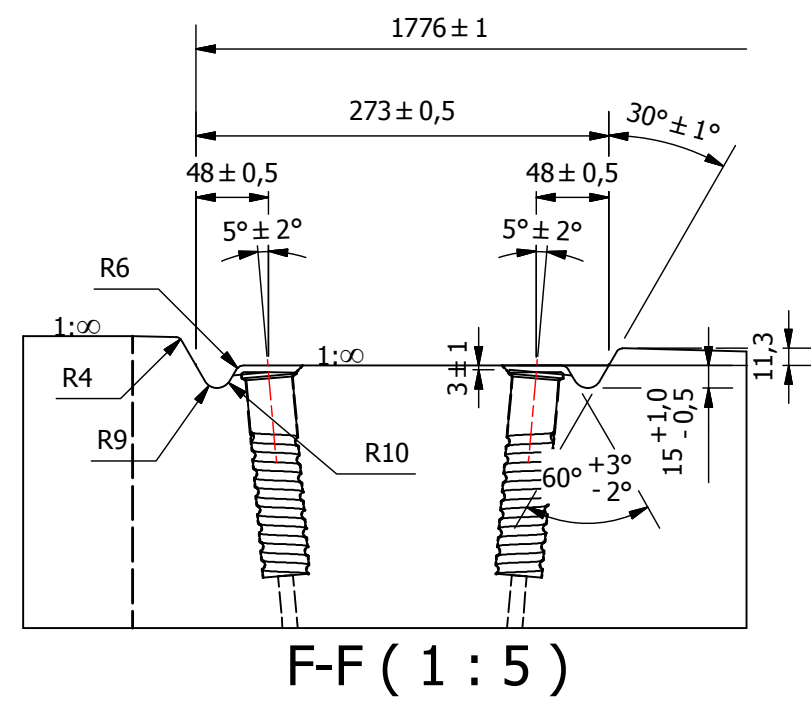
GVB Infra BV. Postbus 2131 1000 CC Amsterdam Tel: 020 - 460.6060


Getekend	D.L. Burggraaf	25-9-2015	nummer
Gecontroleerd	E.J. de Graaf	23-2-2016	
Discipline	Spoor	Onderdeel	
Omschrijving	Dwarsligger B3		
Tekeningnummer	0003	Wijziging	A
		Blad	1 van 1
		Formaat	A3
		Schaal	1:10

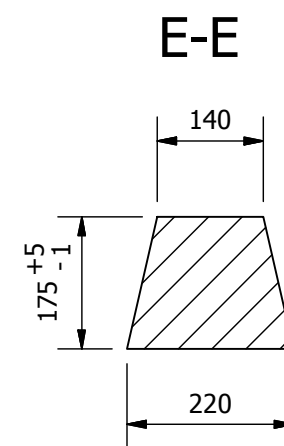
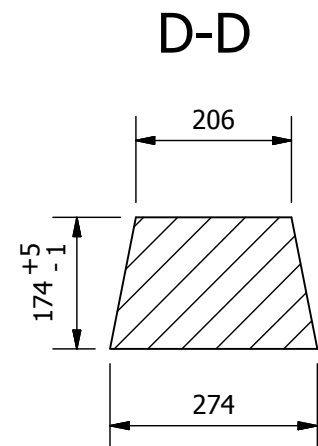
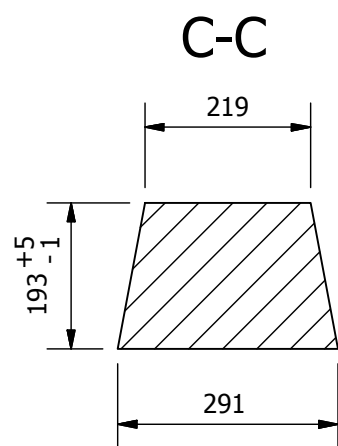
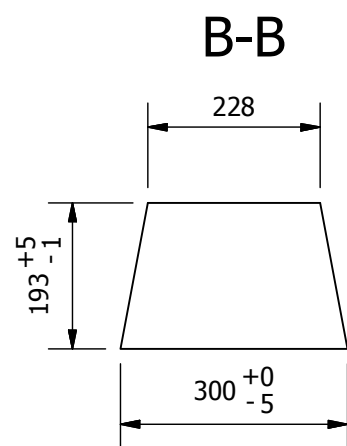
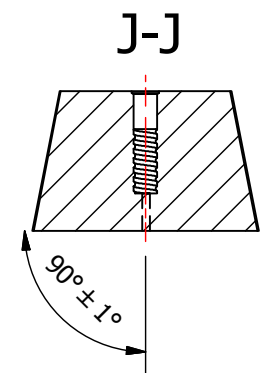
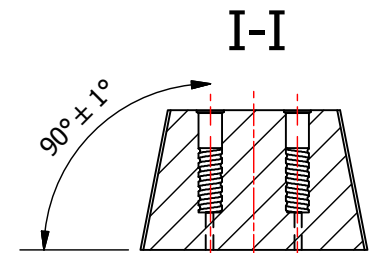
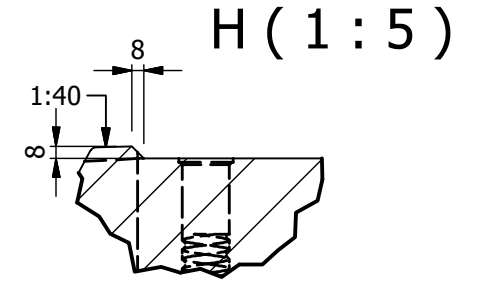
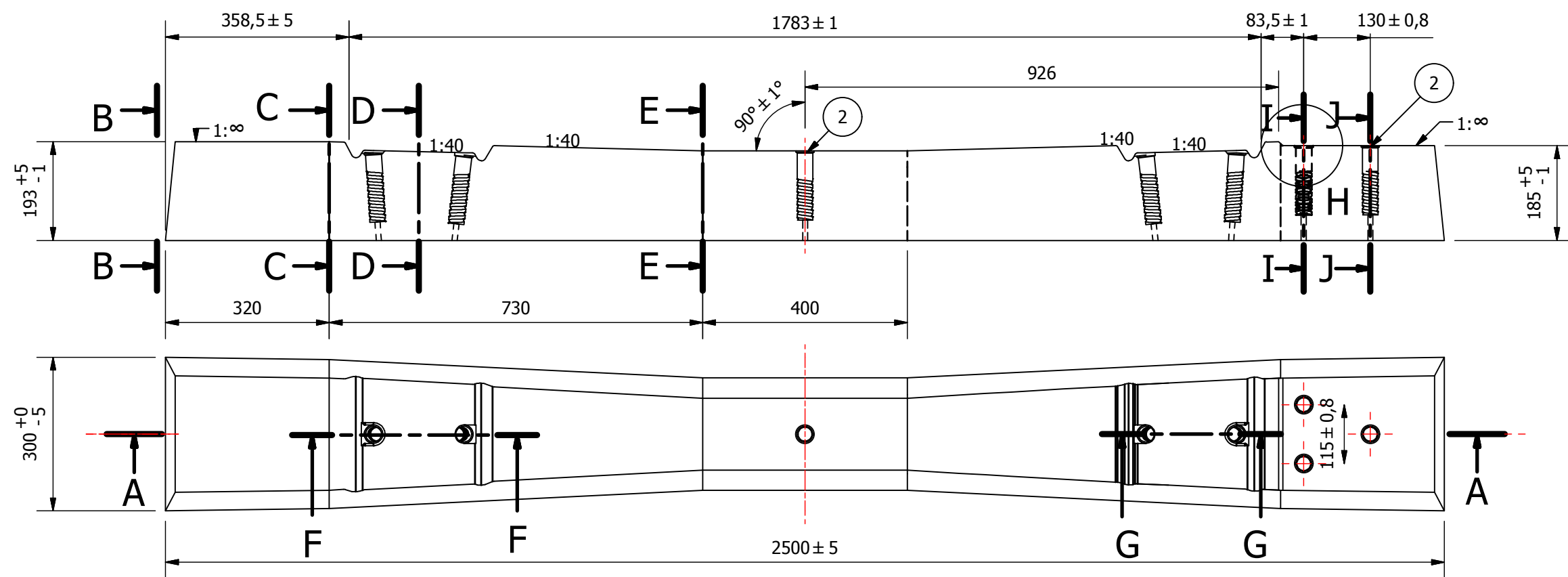


Opmerking:
-Schroefhulzen aan de onderzijde optioneel open uitvoeren

Hoeveelheid	Stuknr	Benaming	Tekeningnr
1	1	Dwarsligger B4	0004
4	2	Kunststof schroefhuls	0011
2	3	Kurkrubber railpad	1001
4	4	Kraagbout	1002
4	5	Volgring ULS 7	1003
4	6	Kunststof opsluitplaat Wfp 14N - 12	1004
4	7	Veerklem SKL 14	1005
2	8	Spoorstaaf 49E1	-

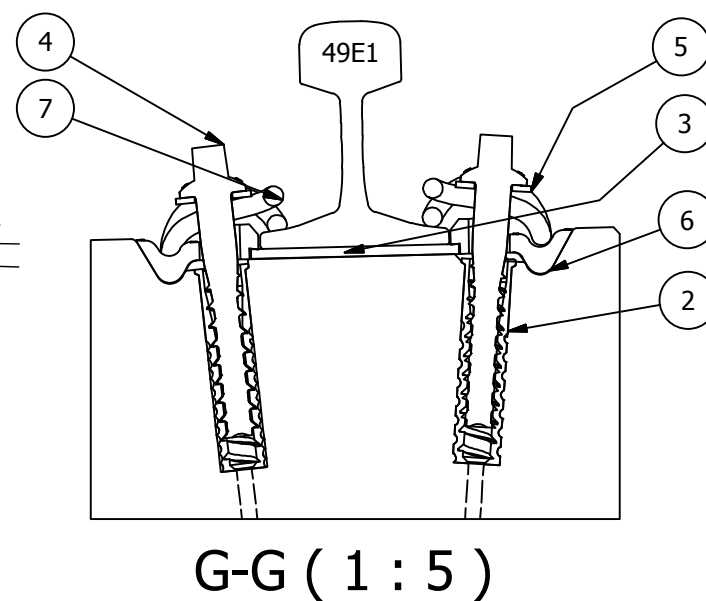
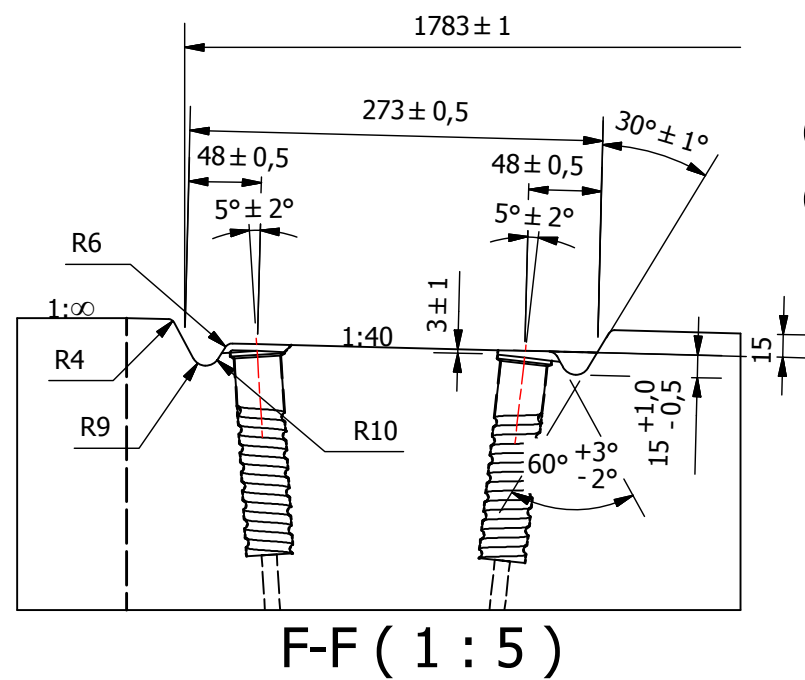



<div> GVB</div> <div>GVB Infra BV. Postbus 2131 1000 CC Amsterdam Tel: 020 - 460.6060</div>				
Getekend	D.L. Burgggraaf		25-9-2015	nummer
Gecontroleerd	E.J. de Graaf		23-2-2016	
Discipline Spoor		Onderdeel		
Omschrijving Dwarsligger B4				
Tekeningnummer 0004		Wijziging A	Blad 1 van 1	Formaat A3
				Schaal 1:10

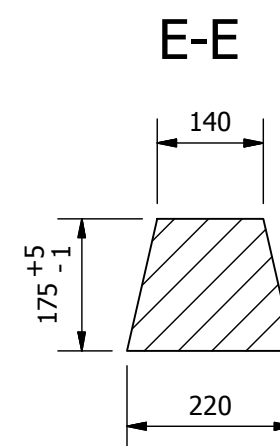
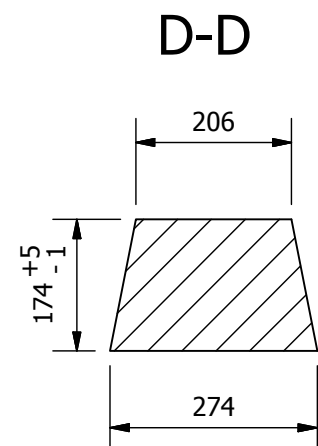
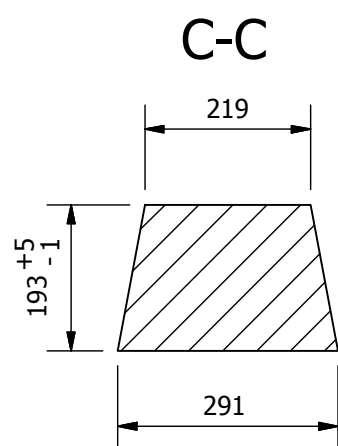
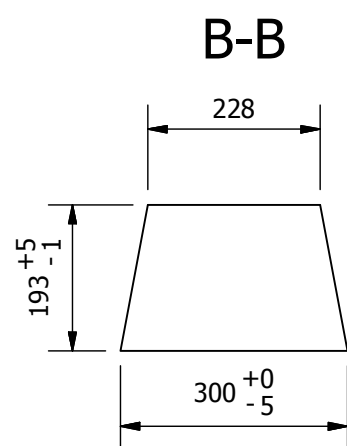
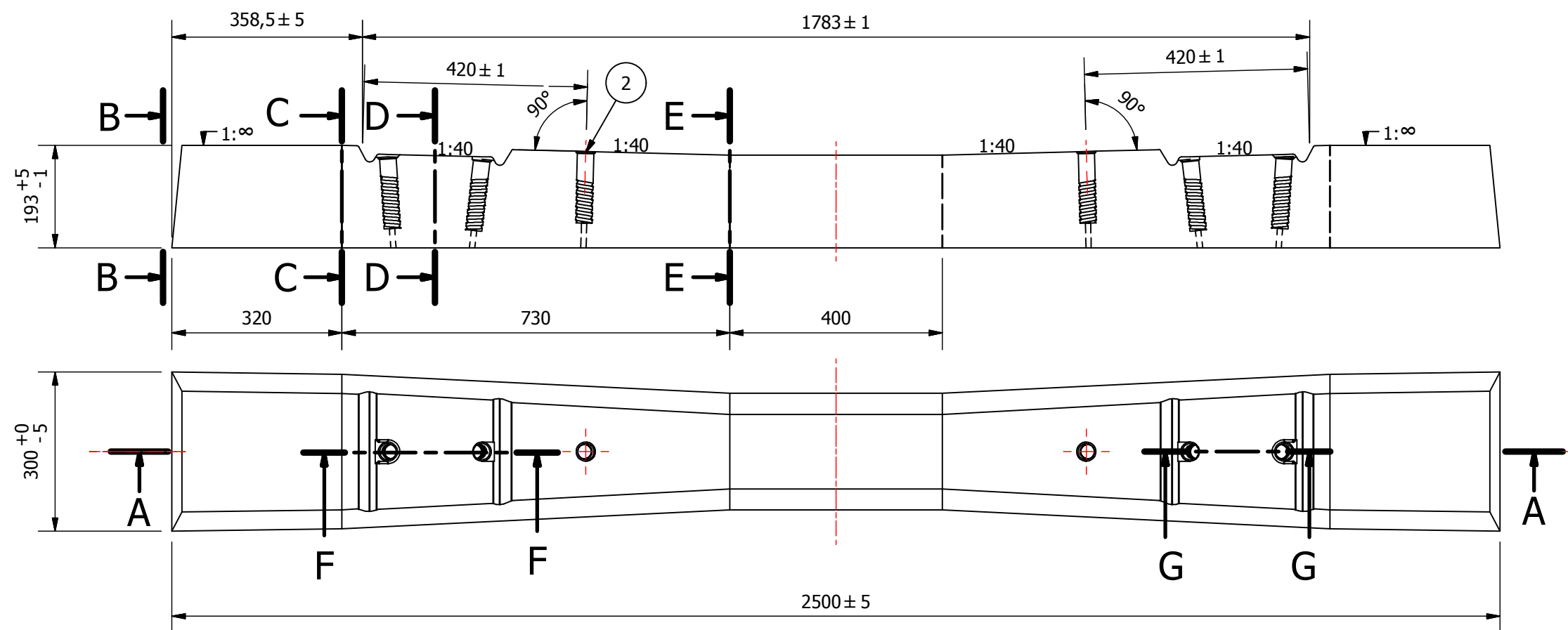


Opmerking:
-Schroefhuizen aan de onderzijde optioneel open uitvoeren

Hoeveelheid	Stuknr	Benaming	Tekeningnr
1	1	Dwarsligger B6	0006
8	2	Kunststof schroefhuis	0011
2	3	Kurkrubber railpad	1001
4	4	Kraagbout	1002
4	5	Volgving ULS 7	1003
4	6	Kunststof opsluitplaat Wfp 14N - 12	1004
4	7	Veerklem SKL 14	1005
2	8	Spoorstaaf 49E1	-

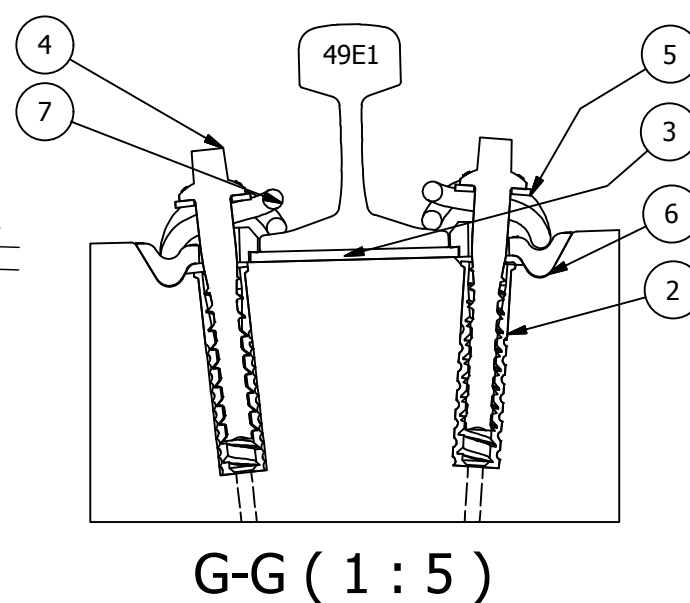
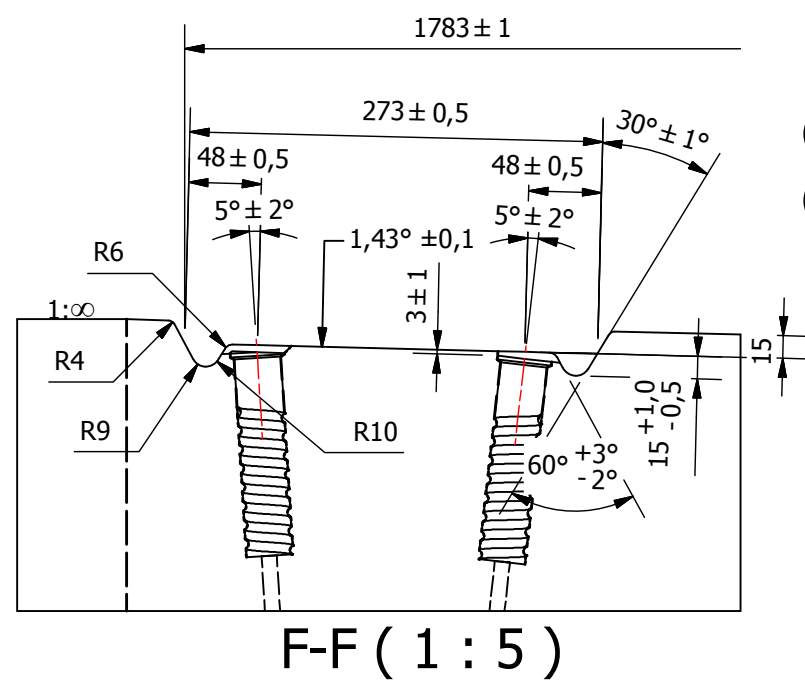



<div>GVB</div> <div>GVB Infra BV. Postbus 2131 1000 CC Amsterdam Tel: 020 - 460.6060</div>				
Getekend	D.L. Burggraaf		25-9-2015	nummer
Gecontroleerd	E.J. de Graaf		23-2-2016	
Discipline Spoor		Onderdeel		
Omschrijving Dwarsligger B6				
Tekeningnummer 0006		Wijziging A	Blad Van 1 van 1	Formaat A3 Schaal 1:10

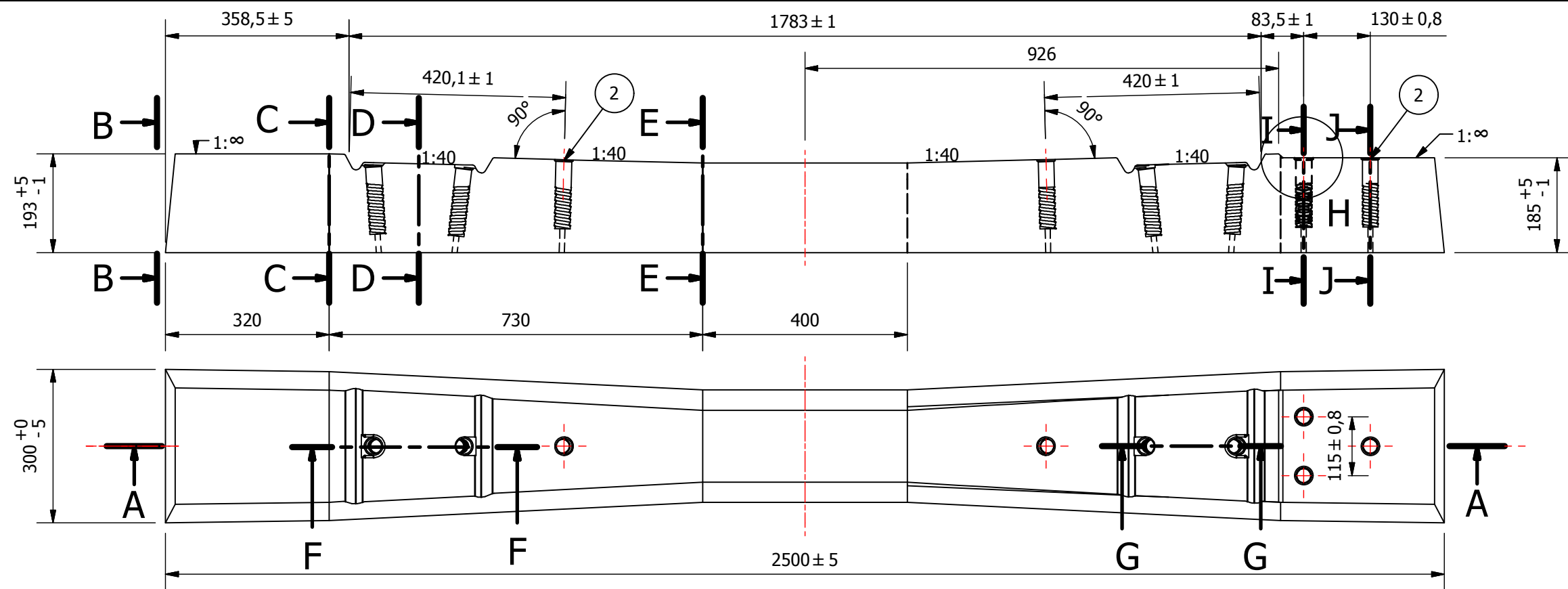


Opmerking:
-Schroefhulzen aan de onderzijde optioneel open uitvoeren

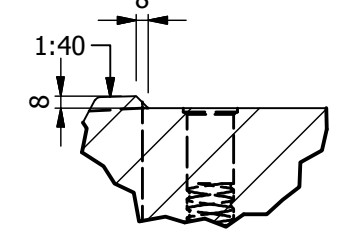
Hoeveelheid	Stuknr	Benaming	Tekeningnr
1	1	Dwarsligger B7	0007
6	2	Kunststof schroefhuls	0011
2	3	Kurkrubber railpad	1001
4	4	Kraagbout	1002
4	5	Volgving ULS 7	1003
4	6	Kunststof opsluitplaat Wfp 14N - 12	1004
4	7	Veerklem SKL 14	1005
2	8	Spoorstaaf 49E1	-



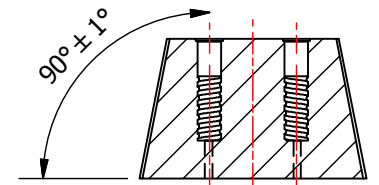
<div></div> <div>GVB Infra BV. Postbus 2131 1000 CC Amsterdam Tel: 020 - 460.6060</div>				
Getekend	D.L. Burggraaf		25-9-2015	nummer
Gecontroleerd	E.J. de Graaf		23-2-2016	
Discipline Spoor		Onderdeel		
Omschrijving Dwarsligger B7				
Tekeningnummer 0007		Wijziging A	Blad Van 1 van 1	Formaat A3 Schaal 1:10



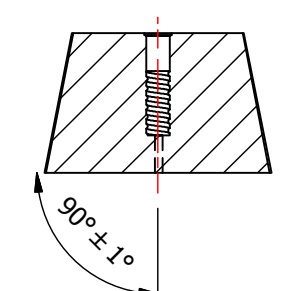
H (1 : 5)



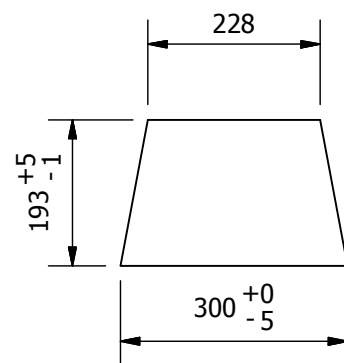
I-I



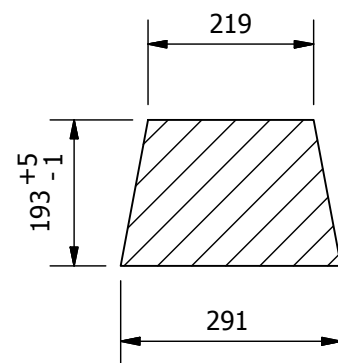
J-J



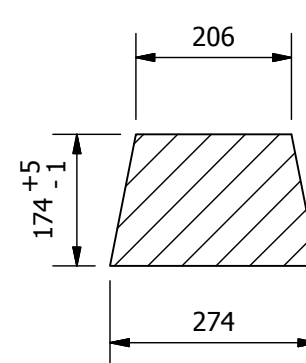
B-B



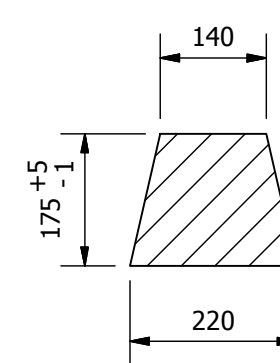
C-C



D-D



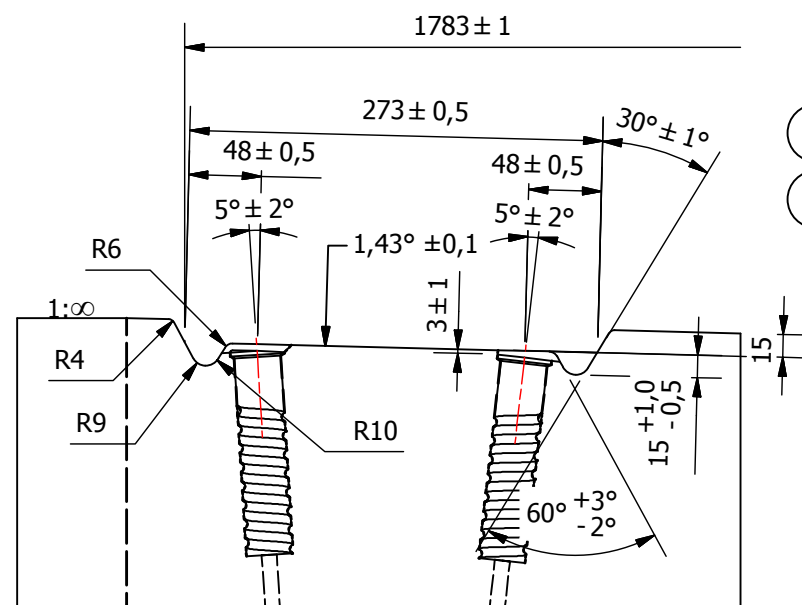
E-E



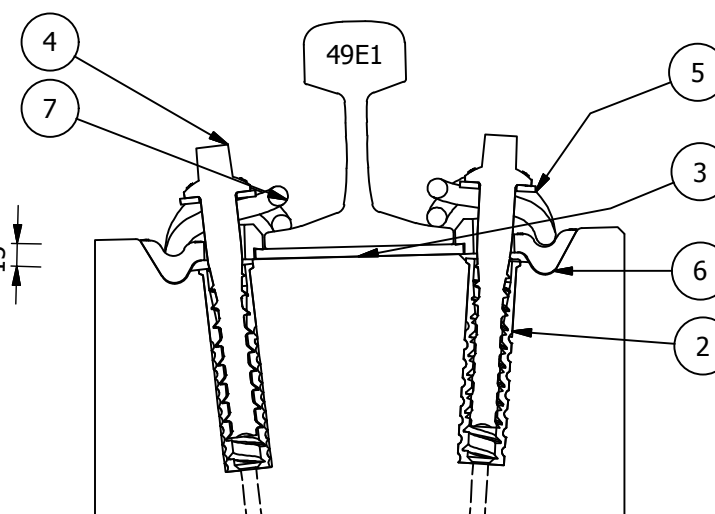
Opmerking:

-Schroefhulzen aan de onderzijde optioneel open uitvoeren

Hoeveelheid	Stuknr	Benaming	Tekeningnr
1	1	Dwarsligger B8	0008
9	2	Kunststof schroefhuls	0011
2	3	Kurkrubber railpad	1001
4	4	Kraagbout	1002
4	5	Volgring ULS 7	1003
4	6	Kunststof opsluitplaat Wfp 14N - 12	1004
4	7	Veerklem SKL 14	1005
2	8	Spoorstaaf 49E1	-



F-F (1 : 5)

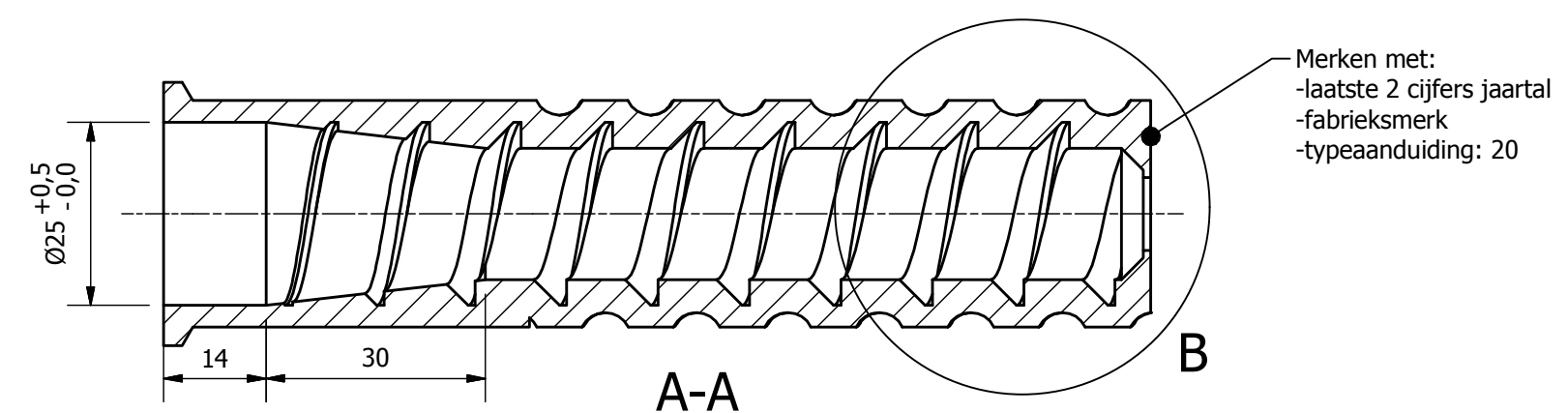
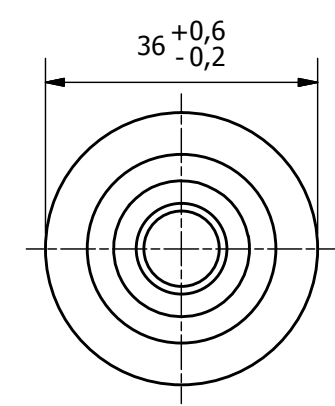
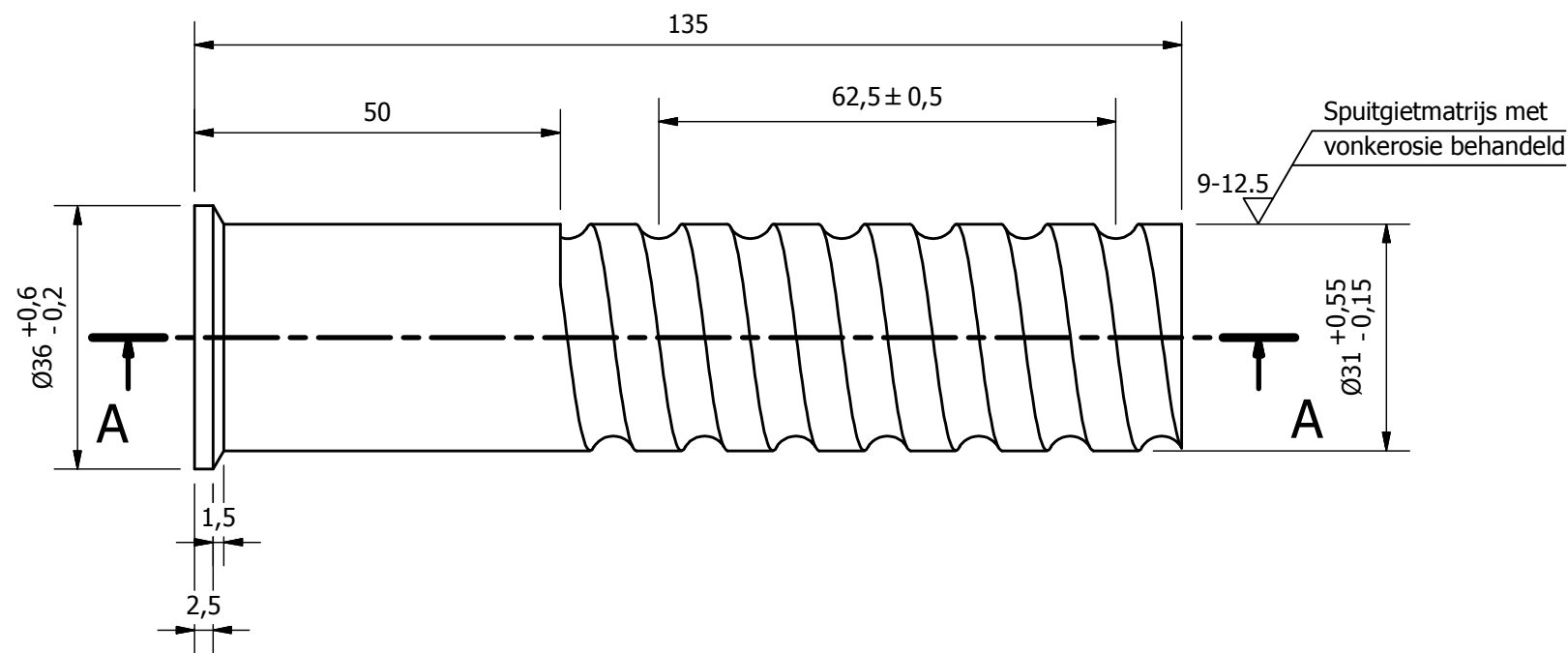


G-G (1 : 5)

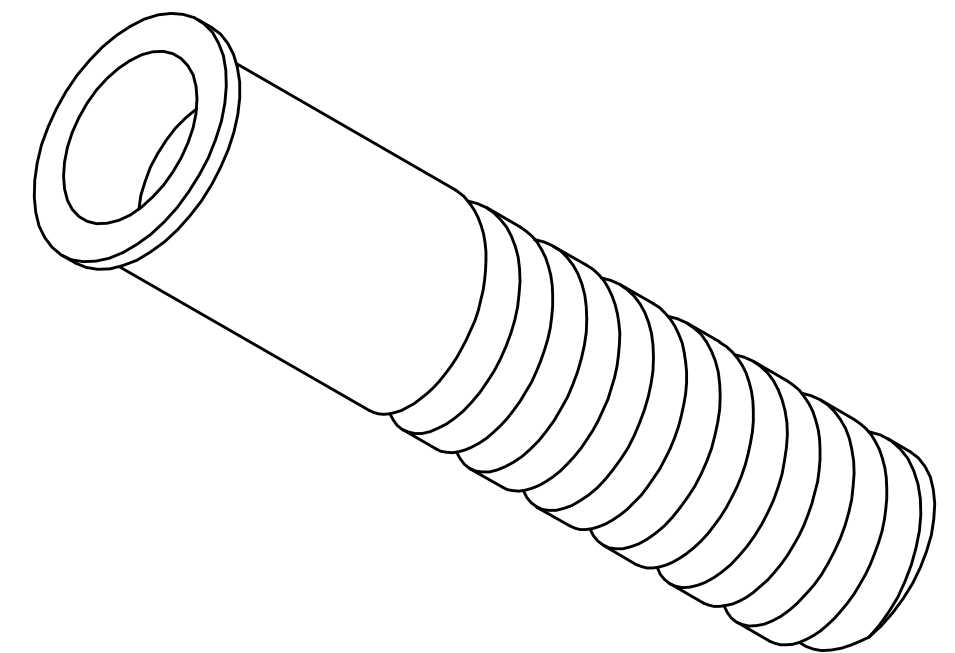
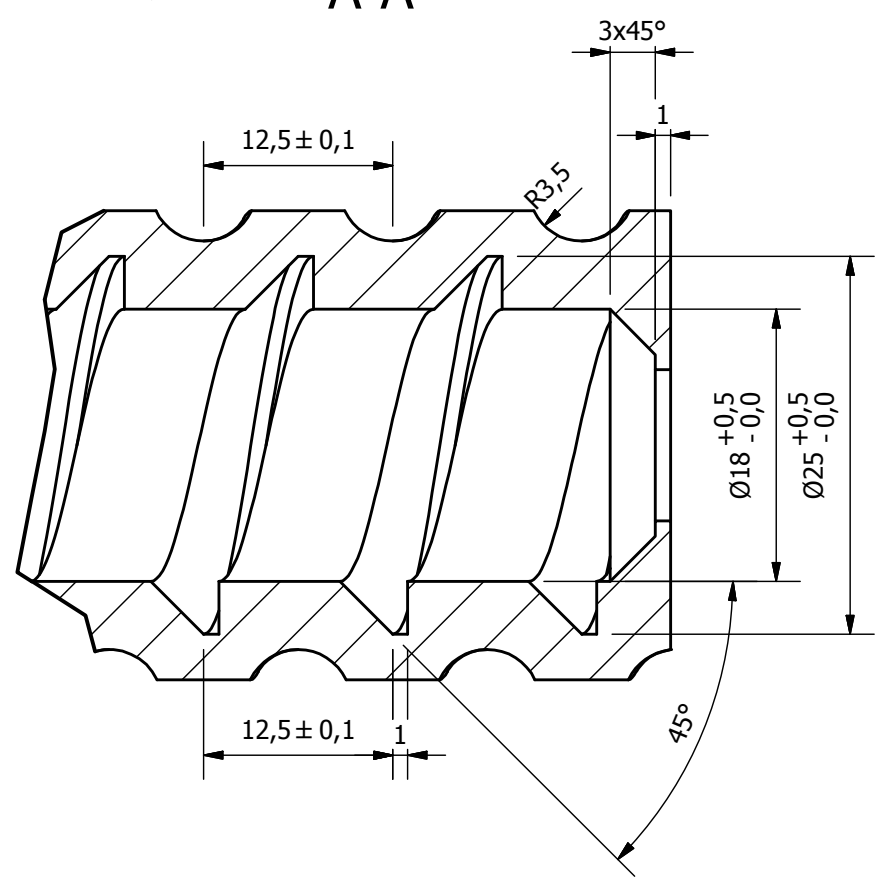


GVB Infra BV. Postbus 2131 1000 CC Amsterdam Tel: 020 - 460.6060

Getekend	D.L. Burggraaf		25-9-2015	nummer
Gecontroleerd	E.J. de Graaf		23-2-2016	
Discipline Spoor		Onderdeel		
Omschrijving Dwarsligger B8				
Tekeningnummer 0008		Wijziging A	Blad 1 van 1	Formaat A3
				Schaal 1:10



B (2 : 1)



Opmerkingen:

- Specificaties volgens "Functionele productspecificatie Voorgespannen betonnen dwarsligger, Deel I"

- Maten zonder tolerantie volgens ISO 2768-m

- Schroefhulzen aan de onderzijde optioneel open uitvoeren

<